

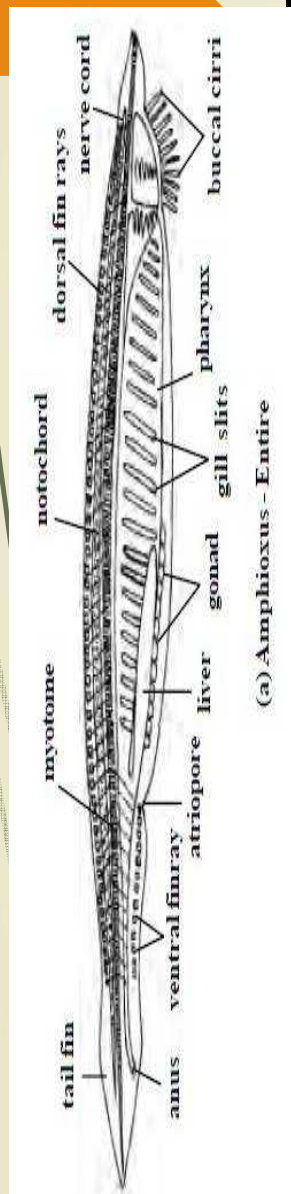
Ahmednagar Jilha Maratha Vidya Prasarak Samaja's
SHRI MULIKADEVI MAHAVIDYALAYA, NIGHOJ,
Tal- Parner, Dist-Ahmednagar


Organizes
Expert Lecture
On
"Silent Features of Class Pisces and Amphibia"
23rd January, 2019

Speaker
Mr.M.R.Khan
Assistant Professor
Department of Zoology,
Dada Patil Mahavidyalaya,
Karjat Dist-Ahmednagar

Introduction:



1. Cephalochordates are small fish like animals which show Chordate characters.
2. The notochord extends the entire length of the body.
3. They show a dorsal, tubular neural cord without a definite brain.


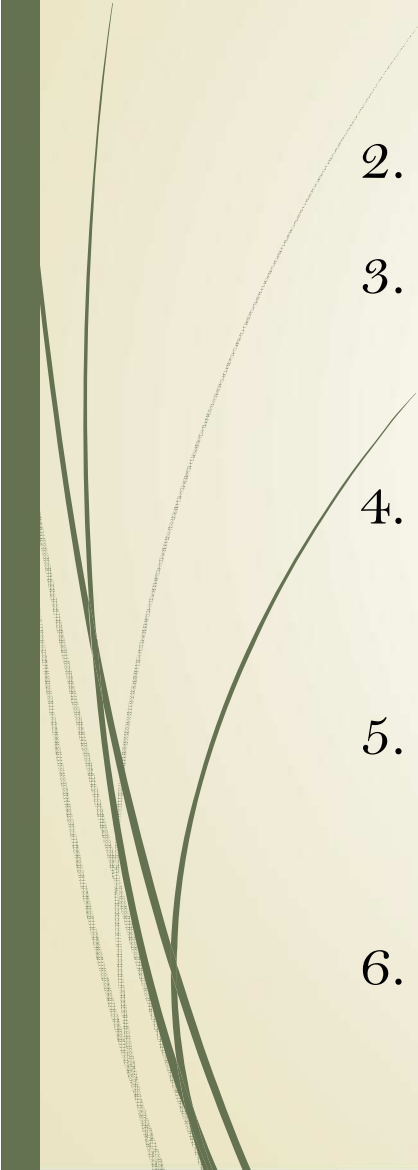


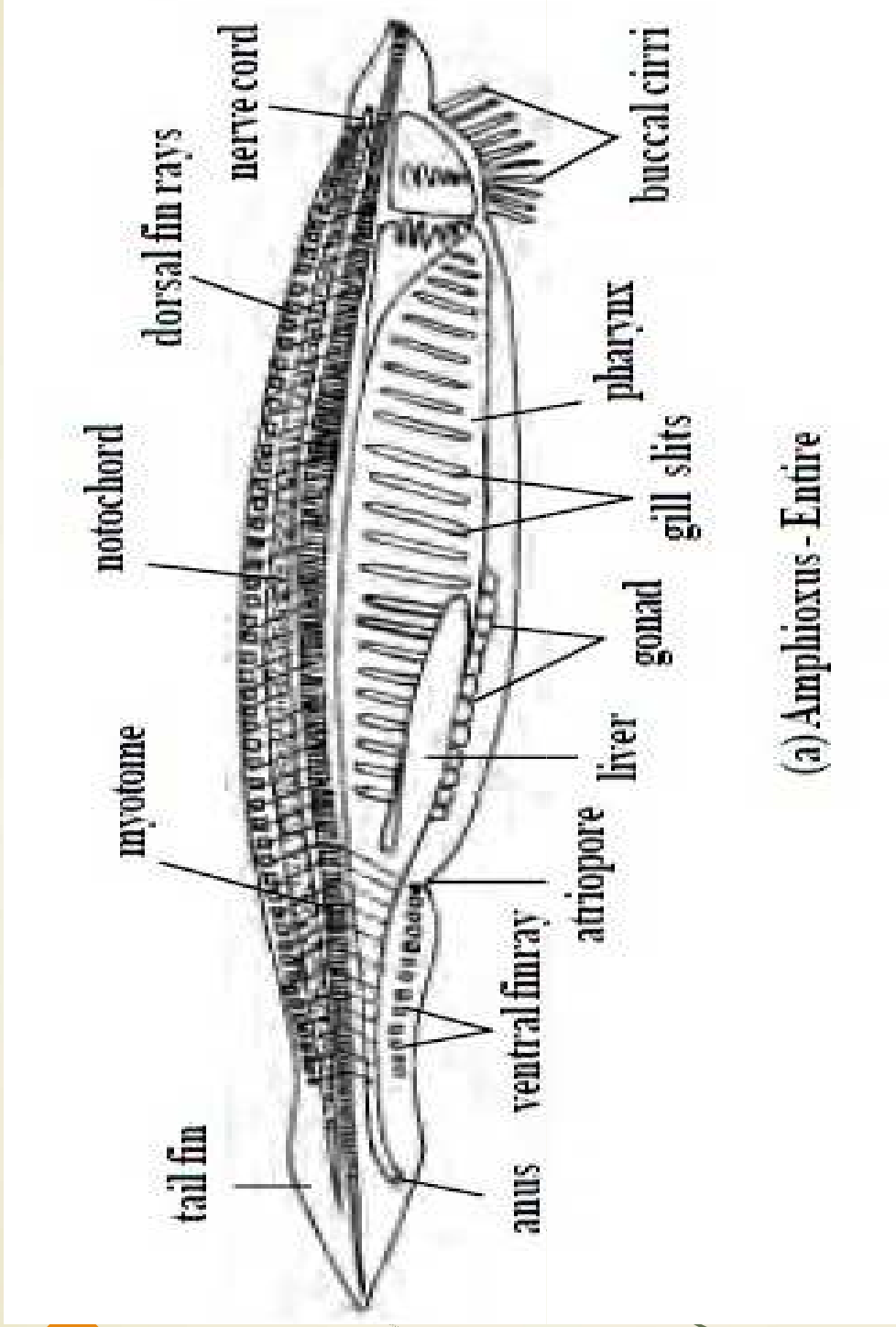


General Characters of Cephalochordata

1. They are marine, widely distributed in shallow water.
2. Body is fish like and is useful for burrowing and swimming.
3. It has distinct head and tail, Appendages are absent.
4. Dorsal, caudal and ventral fins are present.
5. Body- wall shows one- cell thick, non-ciliated epidermis, dermis, connective tissue, striated muscle and parietal peritoneum.

- 
- 
1. It has no exoskeleton. Notochord extends from the anterior end to posterior end.
 2. Enterocoelic coelom is present. However, reduced in the pharyngeal region by atrium.
 3. Alimentary canal is long. It includes a large pharynx with many gill-slits ciliary mode of feeding is developed.
 4. Gills will perform respiration.
 5. Circulatory system is closed.
 6. Heart and respiratory pigments are absent.

- 
- 
1. Excretory system shows paired protonephridia with solenocytes.
 2. Brain is not present
 3. Two pairs of cerebral and several pairs of spinal nerves are present.
 4. Sexes are separate. Gonads are metamerically arranged and without gonoducts.
 5. Asexual reproduction will not take place.
Fertilization is external water
 6. Ex- Amphioxus



(a) Amphioxus - Entire



A close-up photograph of a bee on a yellow flower. The bee is positioned on the left side of the frame, facing right. It has a fuzzy, brown and black body, large black eyes, and transparent wings. Its mouthparts are visible, and it appears to be interacting with the flower's center. The flower is bright yellow with many small, pointed petals. The background is a soft, out-of-focus green. Overlaid on the right side of the image is a vertical white banner with the words "THANK YOU" in a bold, red, serif font.

THANK YOU